A close-up photograph of two hands wearing blue nitrile gloves, shaking in a firm grip. The hands are positioned in the center of the frame, with the background being a soft, out-of-focus light color. The gloves are a vibrant blue, and the hands are wearing white lab coats.

A **SwedenBIO** member-to-member  
offer: **The Fisher Scientific Channel**

Find it at [fishersci.se](https://fishersci.se)

# Member-to member offer for Laboratory Supplies

## SAVE ON LABORATORY ESSENTIALS

Through the SwedenBIO member-to-member platform, The Fisher Scientific team is providing SwedenBIO members with a complete portfolio of laboratory equipment, chemicals, supplies and services offering exceptional choice and convenience.

Whether you are a new start-up company or an established biotech, the Fisher Scientific channel is your one-stop shop for life science products and services for the bioscience community. Fisher Scientific's extensive list of exclusive alliances with major manufacturers allows us to give you easy access to the products that are most in demand – all from one supplier.

### MEMBER-TO-MEMBER HIGHLIGHTS

- Access the complete portfolio of laboratory equipment, chemicals, supplies and services at: [fishersci.se](https://fishersci.se)
- Hot-list of over 1600 specially priced biotech laboratory essentials with an average discount of **40%**
- Discounts on hot-list items may reach as high as **90%**
- Average of **15%** discount on non-hot list items throughout the Fisher Scientific catalogue

- Additional customised discounts specifically for your company are optional
- Several programmes available to fulfil your needs

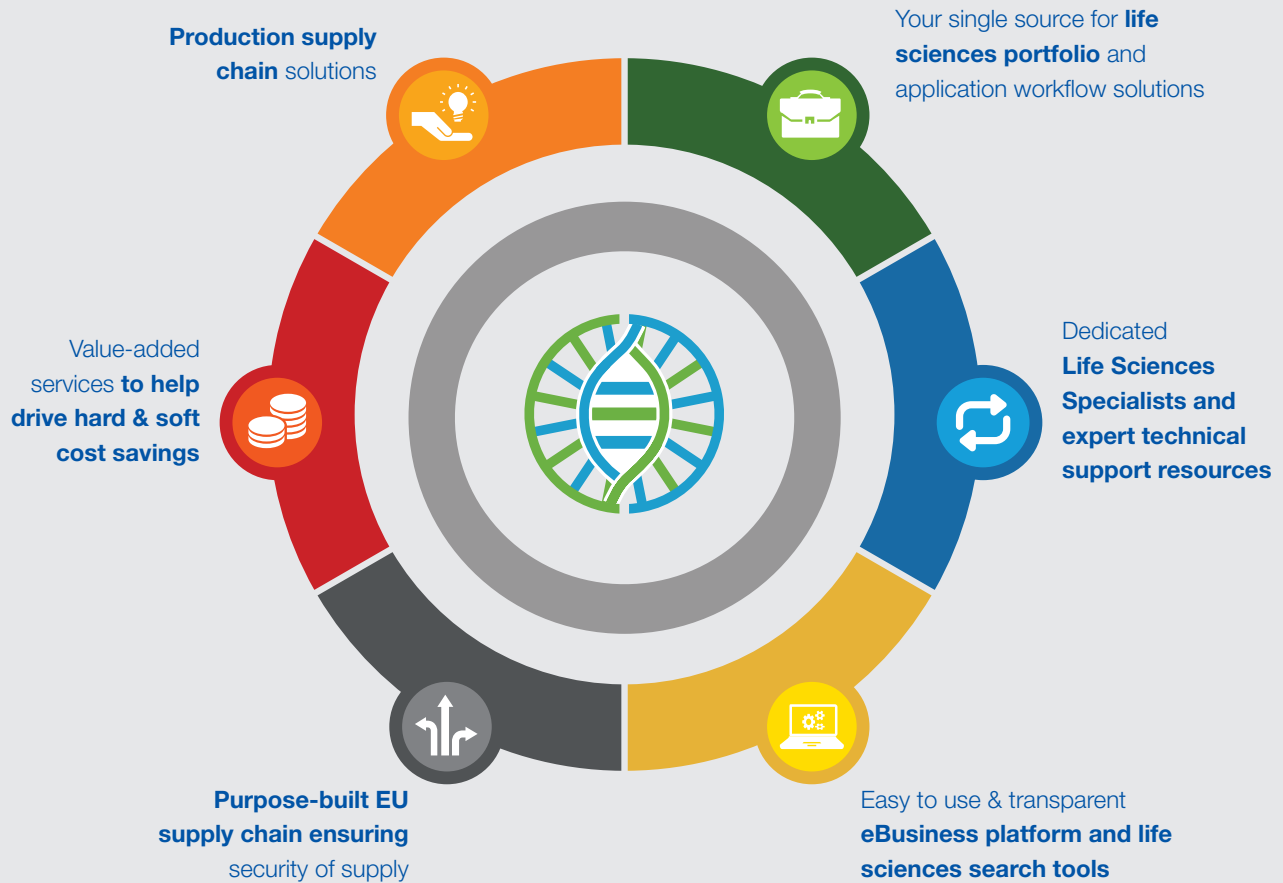
### START SAVING

- For more information contact Gonja van Hardeveld, Regional Sales Manager at Fisher Scientific, at [gonja.vanhardeveld@thermofisher.com](mailto:gonja.vanhardeveld@thermofisher.com)

The diverse Swedish life science ecosystem is characterised by strong business connections and partnerships between companies of all sizes. The SwedenBIO Member-to-Member platform captures the essence of this collaborative spirit and enables companies in our community to access members-exclusive offers of various products and services

# The Fisher Scientific channel offers a wide range of capabilities

Different tools to help optimise your supply chain  
and increase productivity





## NEW LAB-START-UP

The New Lab Start-Up (NLSU) Programme is designed specifically for those customers setting up a new lab, or refurbishing an existing one, and offers you all the support you need together with the key advantage of sourcing everything from a one-stop supplier at very competitive prices.

As well as potential savings of over €50 000, and guidance from a dedicated sales representative, the NLSU programme also offers:

- BIG brand savings
- Flexibility
- A package tailored to your needs

- A comprehensive product range
- Self-manufactured chemicals
- New, free and special-offer products
- Fisherbrand™ vouchers the more you spend

Eligibility for the programme:

- Setting up a new lab
- Expanding or renovating your lab
- Relocating to new premises
- In receipt of a first-time grant

Simply fill out the online form:

[fishersci.se/se/en/new-lab-start-up.html](https://fishersci.se/se/en/new-lab-start-up.html)

3M

Ansell

asecos

BINDER  
Best conditions for your success

BioTek  
A part of Agilent

burkle

BRADY  
WHEN PERFORMANCE MATTERS MOST™

CORNING

Cole-Parmer  
scientific experts

DUPONT

DURAN  
WHEATON  
KIMBLE

epENDORF

fisherbrand

GE  
Distributor  
GE Healthcare

GILSON

HB Harvard  
Bioscience, Inc.

Honeywell

Kimberly-Clark  
PROFESSIONAL™

iba  
Solutions  
For Life Sciences

LABCONCO

memmert  
Experts in Thermostatics

MERCK

METTLER TOLEDO

MP  
BIOMEDICALS

OHRAU

SARTORIUS

SCAT  
europe

SP SCIENCEWARE  
HB Instrument • Bel-Art • Ulmaof-LabGlass

thermo scientific

# UNITY LAB SERVICES

To improve your laboratory's efficiency, you should be free to focus on your work, not burdened with managing service requirements. We provide a complete portfolio of customised, integrated and innovative services and support solutions designed to help you improve productivity, reduce total cost of ownership and ensure compliance throughout your laboratory – from equipment acquisition right through to its end-of-life!

## SOLUTIONS FOR YOUR INSTRUMENTS

Items of laboratory and scientific equipment are major investments and are very important to your lab. Unity™ Lab Services can help protect and optimise that investment. We provide a complete portfolio of services and support solutions designed to help you improve productivity, reduce total cost of ownership and ensure performance throughout your laboratory.

## ENTERPRISE SOLUTIONS

Unity Lab Services is your single source for integrated lab services, support and supply management:

- Complete multi-vendor instrument and equipment service management
- Glassware washing, gas cylinder and garment management
- Order, inventory, chemical and dock management
- Service evaluations & needs assessments
- Highly trained, seasoned professionals
- Training programmes

**unity** lab services



New Partnership for Laboratory Supplies

# ONLINE

With our advanced and state-of-the-art website you can take control.

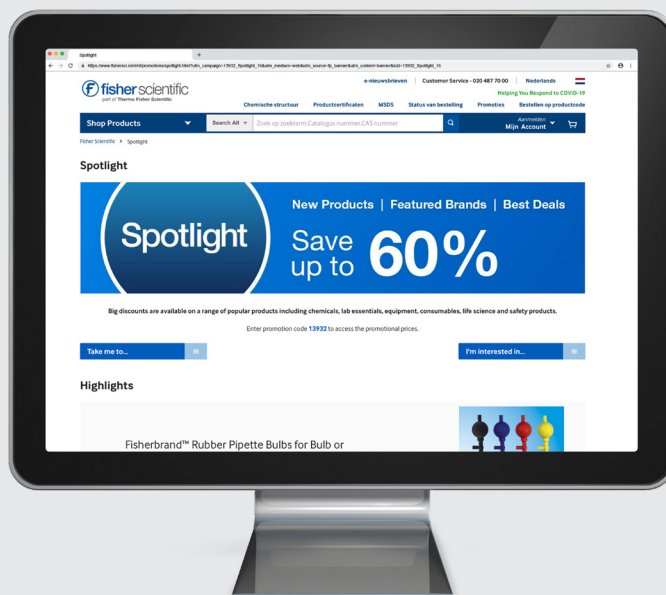
At [fishersci.se](https://fishersci.se) we have the easiest and quickest solutions:

- Speciality product search tools such as our **new antibody tool**
- Add approval workflows to provide greater control
- See your quotes and convert them into an order
- Download purchase history for your accounts
- Real-time stock availability and lead times
- Enhanced order visibility and tracking
- Create My Lists for easy reordering
- Customer net pricing

1. [Apply for a business account](#) to make a purchase from our full range of products
2. [Sign-up for a web account](#) if you already have a business account and know your business account number, to then buy online.

More can be found online:

- Products in our 'Spotlight' promotions
  - Same-day shipment for items in the Fisher Scientific 'Edge' programme
  - 'Product of the Month' features
  - Subscribe to newsletters
  - Exclusive promo codes
  - New products
- and much much more ...





# OTHER

## PROPRIETARY LABEL PRODUCTS FROM FISHERBRAND PRODUCTS

- Reliable, trusted products
- Economical quality brand alternative
- Wide range of consumables and lab essentials
- Premium features similar to leading competitor brands but often at a fraction of the cost

## TOP CHEMICALS AND REAGENTS

A comprehensive portfolio of organics, inorganics, solvents and bioreagents from these premium Thermo Fisher Scientific brands. Our specialised chemical services are also able to offer tailored solvents or solvent blends to your own specification, customised pack sizes or pack labelling, supply chain control and integrity, special testing plus inventory management with lot control.



**Alfa Aesar**



